



Performing Arts Members and Affiliates

We're for the Arts!

The United Performing Arts Fund (UPAF) was founded in 1967 to provide funding to local performing arts organizations. Today, UPAF supports 14 Performing Arts Members and 33 Affiliates. UPAF is proudly supported by 14,000 donors who value the vibrant, diverse and accessible performing arts scene available to all in our community.

Community contributions are essential in allowing our region's artists and groups to flourish and produce:

- Performances that inspire, challenge minds and stir emotions.
 - Confident and energized youth who use the arts as a springboard for lives filled with creativity.
 - Shared experiences that connect people from all backgrounds and ages.
-

Our Performing Arts Members

UPAF's fundraising dollars are allocated to support 47 vibrant local performing arts organizations.

Cornerstone Members



Founded in 1987, First Stage is one of the nation's most acclaimed theaters for young people and families, and is the second largest theater company in Milwaukee. First Stage touches hearts, engages minds, and transforms lives by creating extraordinary theater experiences for young people and families through Professional Theater Productions that engage, enlighten, and entertain; unparalleled Theater Academy training for young people, fostering life skills

through stage skills; and dynamic Theater in Education programs that promote active learning in our schools and community. First Stage is a member of TYA/USA, the American Alliance for Theatre and Education, the Wisconsin Alliance for Arts Education, Milwaukee Arts Partners and is a cornerstone member of the United Performing Arts Fund (UPAF).

Location: Milwaukee

Website: firststage.org

Ticket Offices: 414-267-2961



The Florentine Opera

As Wisconsin's oldest fully professional performing arts organization and the sixth-oldest opera company in the country, the Florentine Opera has been bringing a bit of the world to Milwaukee since 1933. We're a powerhouse for sharing different voices and stories through adventurous, fully staged productions of the most beloved and delightful operas. The camaraderie, music, and thrilling vocal athleticism will inspire you. Through community and educational programming, the Florentine also provides

vital arts experiences for 15,000 children in Southeast Wisconsin annually, nurtures new audiences of all ages, and expands cultural horizons. Join us for a performance that will sweep you off your feet. Maggey Oplinger serves as General Director and CEO."

Location: Milwaukee

Website: florentineopera.org

Ticket Offices: 414-291-5700, ext. 224



MILWAUKEE BALLET

MICHAEL PINK
ARTISTIC DIRECTOR

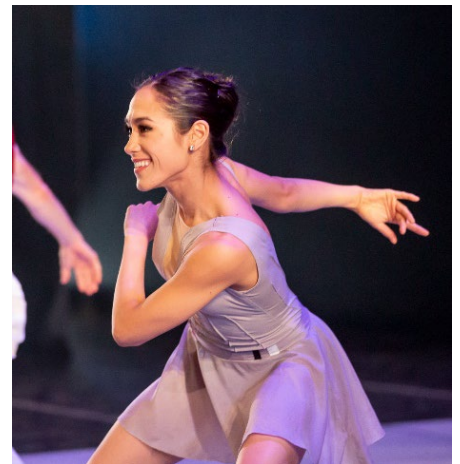
Milwaukee Ballet is renowned for presenting new interpretations of story ballets and introducing compelling contemporary works. It is made up of an international

Company of 24 professional dancers, the Milwaukee Ballet II trainee Company, and a dedicated orchestra. Milwaukee Ballet School & Academy is the only professional studio school in the Midwest accredited by the National Association of Schools of Dance, with a Pre-Professional Program for teens. Our Community Engagement programs embrace a "ballet without boundaries" philosophy, offering free school-year ballet classes; adaptive ballet for youth with disabilities, and free summer performances out in the community.

Location: Milwaukee

Website: milwaukeeballet.org

Ticket Offices: 414-902-2103



Milwaukee Rep is the largest performing arts organization in Wisconsin in terms of audiences served and one of the largest professional theaters in the country. Each year, The Rep welcomes up to 275,000 people at nearly 700 performances of 15 productions ranging from compelling dramas, powerful classics, new plays and full-scale musicals in its three unique performance venues. Over the course of six decades, The Rep has gained a



national reputation as an incubator of new work, an agent of community change and a forward-thinking provider

of vital arts education programs. Milwaukee Repertory Theater ignites positive change in the cultural, social and economic vitality of its community by creating world-class theater experiences that entertain, provoke and inspire meaningful dialogue among an audience representative of Milwaukee's rich diversity.

Milwaukee Rep is led by Artistic Director Mark Clements and Executive Director Chad Bauman. Live performances take place in the Patty & Jay Baker Theater Complex.

Location: Milwaukee
Website: milwaukeeep.com
Ticket Offices: 414-224-9490



KEN-DAVID MASUR / MUSIC DIRECTOR

The Milwaukee Symphony Orchestra is among the finest orchestras in the nation and the largest cultural institution in Wisconsin. Since its inception in 1959, the MSO has found innovative ways to give music a home in the region, develop music appreciation and talent among area youth, and raise the national reputation of Milwaukee. The MSO's 70 full-time professional musicians perform more than 135 classics, pops, family, education and community concerts each season in venues throughout the state. The MSO's standard of excellence extends beyond the concert hall and into the community, reaching more than 40,000 children and their families through its Arts in Community Education (ACE) program, Youth and Teen concerts, and Family Series. Mark Niehaus serves as President and Executive Director and Ken-David Masur serves as Music Director. Live performances take place in the newly renovated historical Bradley Symphony Center.

Location: Milwaukee
Website: mso.org
Ticket Offices: 414-291-7605



Founded in 1959, Skylight is Milwaukee's professional Equity music theatre company and the largest employer of Wisconsin actors in the state. Skylight produces the full breadth of music theatre including blockbuster Broadway musicals, reimagined operas, exciting world premieres, and contemporary off-Broadway hits. Known for artistic excellence, Skylight brings distinctive imagination to music theatre works, creating personal connections between artists and audiences. The experience is further enhanced by the intimacy of Skylight's Historic Third Ward home, the Cabot Theatre in the Broadway Theatre Center. Based on the design of an 18th-century French opera house, the 350-seat Cabot Theatre is considered one of Milwaukee's most beautiful theatres. Led by Artistic Director Michael Unger, Skylight embraces the power of music and theatre to illuminate fresh perspectives on the human condition. Each year, Skylight Music Theatre entertains a wide and diverse audience of more than 30,000 people, in addition to offering educational programming reaching over 14,000 students.



Location: Milwaukee
Website: skylightmusictheatre.org
Ticket Offices: 414-291-7800

Members



across the region.

Location: Franklin

Website: belcanto.org

Ticket Offices: 414-481-8801, ext. 1

Founded in 1931, Bel Canto Chorus is Southeastern Wisconsin's oldest continually performing arts organization. The group includes an auditioned adult performance chorus of approximately 100 singers and a Senior Singers program for those 55 or better who want to sing in an organized performance chorus. Live performances take place at venues



Black Arts MKE's mission is to increase the availability and quality of African American arts and culture. We collaborate annually with over 100 performing artists of color and organizations including in-residence theatre group Bronzeville Arts Ensemble to illuminate the Black experience in America by developing and creating theatre while also providing artistic and educational programming opportunities, collaborating with the local and national community, and inspiring healing through positive social change.

Black Arts MKE's annual signature performance – Black Nativity by Langston Hughes is a holiday musical favorite in Milwaukee featuring an all-black, MKE-area based

cast. We're a recipient of the APAP ArtsForward, NEA Grant for Arts Projects, The Black Seed and Theatre Communications Group national awards. Black Arts MKE is a producing theatre with World Premier Wisconsin. We are a proud Member Group of the United Performing Arts Fund and Resident Group at the Marcus Performing Arts Center. Black Arts MKE is a nonprofit 501(c)(3) corporation.

Location: Milwaukee

Website: blackartsmke.org

Ticket Offices: 414-270-4494



Founded in 1997, Danceworks Performance Company is a dynamic group of dancers/choreographers that is committed to creating and performing contemporary dance that is physical, virtuosic, entertaining and honest. Danceworks Performance Company's artists embody the mission of Danceworks, Inc., a nonprofit founded in 1992, to enhance the joy, health and creativity of the community through performances, classes and outreach activities that integrate dance and other art forms. Danceworks is committed to taking arts and arts learning beyond the studio and theatre and into the community by creating work that resonates with diverse groups of people, and serves more than 60,000

children, adults and seniors each year through original contemporary performances, training and themed dance concerts in Danceworks Studio Theatre and out in the community by Danceworks Youth Performance Company, an experimental venue for local and national artists called the DanceLAB; weekly dance and dance fitness classes; dance and arts programming at schools in Milwaukee and surrounding communities; and dance and arts programming for older adults.

Location: Milwaukee

Website: danceworksmke.org

Ticket Offices: 414-277-8480, ext. 6025



Milwaukee Chamber Theatre (MCT) produces intimate, high-quality, professional works of literary merit that engage and challenge the audience, while employing and nurturing principally local theatre artists. MCT was co-founded in 1975 by two local actors who envisioned a space where audiences could open their minds to new theatrical ideas and Milwaukee's theatre professionals could broaden their skills and apply their craft.

MCT serves as a vital building block in the theater industry and the city of Milwaukee as a whole due to our unwavering commitment to building community and increasing quality of life for our region. As a leader in supporting local talent, MCT provides regular employment and a stable artistic home to Milwaukee theatre professionals through a five-play performance season, the Young Playwrights Festival (YPF) and the Montgomery Davis Play Development Series (MDPDS). Each year over 16,000 individuals attend MCT performances, take advantage of our educational opportunities, and participate in our artistic activities.

Location: Milwaukee

Website: milwaukeechambertheatre.org

Ticket Offices: 414-250-8041



Since 1956, Milwaukee Youth Symphony Orchestra (MYSO) has been nurturing, challenging, and inspiring generations of students, profoundly changing lives and our community for the better. MYSO has grown from one orchestra and 30 students to become one of the largest youth orchestras in the country, and one of the most respected. It serves 900 of the area's young musicians who come from more than 200 schools, 60 communities, and as many as 14 counties throughout southeastern Wisconsin and northern Illinois. It also provides outreach programs to an additional 5,000 youth annually through the more than 100 concerts we perform.

The importance of MYSO as a catalyst for youth development and community change has not gone unnoticed. In the 2015-16 season, MYSO received the National Arts and Humanities Youth Program Award, the country's highest honor for after-school youth arts and humanities programs, presented by the President's Committee on the Arts and the Humanities.

Location: Milwaukee

Website: myso.org

Ticket Offices: 414-267-2950





Next Act Theatre was founded in 1990 upon the merger of Next Generation Theatre and Theatre Tesseract. Next Act's mission is to engage the hearts and minds of audiences with compelling and intimate theatre productions intended to stimulate thought,

foster the exchange of ideas and promote the development of new perspectives and understanding. Productions center primarily on stories that speak to relevant topics.



Next Act also offers year-round education opportunities, going into classrooms as well as bringing students to the theatre for its Next Actors: Summer Theatre for Teens program. Programs are offered for free (along with no-cost lunches for participants of the summer program), and student matinee tickets are offered at deeply-discounted rates.

Location: Milwaukee

Website: nextact.org

Ticket Offices: 414-278-0765

Present Music is Milwaukee's internationally acclaimed new-music ensemble that commissions, performs and records the music of living composers. Founded in 1982, Present Music commissions and works closely with



many of the nation's most exciting and important composers. Present Music's mission is to engage artists and audiences in imaginative and provocative experiences with new music through ensemble performance and education. Live performances take place at venues across the region.



Location: Milwaukee

Website: presentmusic.org

Ticket Offices: 414-271-0711x2



Renaissance Theaterworks' (RTW's) mission is to create moving theater that connects with our shared sense of being human; dedicated to promoting the work of women, onstage and off. RTW is Milwaukee's only women-founded,



women-run theater company and has been narrowing the gender parity gap in the arts for over 25 years. Located in Milwaukee's Historic Third Ward, RTW produces intimate and thought-provoking theater in The Studio Theatre at the Broadway Theatre Center.

Location: Milwaukee

Website: r-t-w.com

Ticket Offices: 414-273-0800

Affiliates



Above the Clouds provides free, faith-based arts education and training to young people ages 5 to 17 who lack arts exposure and access. Above the Clouds is a safe environment where children can express themselves through drama, dance, martial arts, stepping, music and other art forms.

Location: Milwaukee

Website: abovethecloudsmilwaukee.com

Phone Number: 414-344-3019



From the Latin “open your soul,” Aperi Animam is a professional choral ensemble whose mission is dedicated to the creation and performance of uniquely atmospheric musical experiences that have an impact on lives and

APERI ANIMAM

vocal early music ensemble



learning throughout the Midwest. Bringing to a perfect life great and evocative music of — and inspired by — the past thousand years, the ensemble invites audiences to quiet their minds and open their souls. By presenting timeless vocal music through a diverse ensemble of highly trained singers, in venues and formats and at price points that make it accessible to people of all ages, backgrounds and cultures, we promote engagement with the performing arts in Milwaukee's neighborhoods and beyond.

Location: Milwaukee

Website: aperianimam.com



CIVIC MUSIC MKE
supports music
education and
provides

performance opportunities for young musicians in the greater Milwaukee area. Its programming places emphasis on reaching underserved youth and celebrating the teachers and musicians who lift them up from daily challenges by showing them the joy of making music and teaching life skills that are baked into the study of music like critical thinking, perseverance and collaboration. For over 103 years, CIVIC MUSIC has served as, and been a catalyst for, music in our community.

Location: Milwaukee

Website: civicmusicmilwaukee.org

Phone: 414-375-4875





It is the mission of The Concord Chamber Orchestra (CCO) to offer

talented, volunteer musicians the opportunity to create stimulating musical experiences for the enjoyment and inspiration of Milwaukee-area audiences. The Concord Chamber Orchestra was founded in 1975 and has been providing accessible classical music to the Milwaukee area for 47 seasons.

Location: Milwaukee

Website: concordorchestra.org

Phone: 414-750-4404



Darby's Dancers provides an inclusive performing arts program for children and young adults with physical and intellectual disabilities in local dance studios across the country

Location: Waukesha, WI

Website: darbysdancers.org

Phone Number: 262-349-9698



Festival City Symphony's mission is to extend the reach of classical music in the Milwaukee-area community by presenting free and affordable concerts in formats that embrace people of all ages.

Location: Milwaukee, WI

Website: festivalcitysymphony.org

Ticket Offices: 262-853-6085



Forte Theatre Company's mission is to create a thriving, professional theatre company in Milwaukee's Southwest suburbs. Their mission is to enrich and engage the community through professional shows and quality education programs.



Location: Franklin, WI

Website: fortetheatrecompany.org

Ticket Offices: 414-366-3634



The mission of Frankly Music is to provide world-class chamber music and small orchestral programs for diverse audiences. Under the artistic direction of Frank Almond, each concert follows the same format: approximately 30 minutes of educational information integrated with a 90-minute program of music, hosting top-tier musicians in more intimate settings at affordable ticket prices.



Location: Milwaukee
Website: franklymusic.org
Ticket Offices: 414-526-8407



Girls Rock Milwaukee (also known as Girls Rock MKE) is a 501(c)(3) non-for-profit organization dedicated to empowering girls, transgender and gender non-conforming individuals of all backgrounds and abilities through music education and performance. At the Girls Rock MKE camp, girls ages 8-16 are guided through the musical, technical, and creative aspects involved in musicianship. Campers form a band, learn to play an instrument, write a song and at the end of the week perform on stage in a rock n' roll showcase. During the week campers also attend workshops that are designed to develop strong life skills and empower them as young woman. The workshops feature guest speakers from the community that promote creativity, cooperation and self-expression with topics such as songwriting, team-building, self-defense, diversity and tolerance, women in music and instrument care.



Location: Milwaukee
Website: girlsrockmke.org



The Kettle Moraine Symphony's mission is to provide outstanding orchestral performances that engage the community and inspire and educate audiences of all ages.

Location: West Bend
Website: kmsymphony.org





Kids from Wisconsin auditions and selects 36 of Wisconsin's most talented young adults to tour with Kids From Wisconsin, work with their community enrichment program "Realize Your Dream" and to prepare themselves as performance professionals.



Location: Milwaukee

Website: kidsfromwi.org

Phone Number: 414-266-7067



The Lake Geneva Symphony Orchestra is dedicated to

involving people of diverse ages, talents and backgrounds in performing and enjoying great music. The orchestra has performed regularly since 2001 in Walworth County, Wisconsin.



Location: Lake Geneva, WI

Website: lakegenevaorchestra.org

Ticket Offices: 262-359-9072



The national award-winning Latino Arts Strings Program (LASP) was established in the fall of 2002 at the United Community Center (UCC) in Milwaukee and is housed in the Bruce-Guadalupe Community School (BGCS). Created and directed by Dinorah Marquez,

this pre-college music training program provides Latino students with instruments, music materials, individual lessons, small group and orchestra, and mariachi ensemble lessons every week, all for a fee of \$75 per school year. The program reaches more than 200 children ages five through eighteen that may otherwise never have the opportunity to receive serious music instruction.



Location: Milwaukee

Website: latinoartsinc.org

Ticket Offices: 414-384-3100



Established in 1969, the Marcus Performing Arts Center (MPAC) is the premier performing arts community gathering space in Southeastern Wisconsin, bringing high-quality arts and cultural programming to the region. As a mission-based nonprofit organization, MPAC strives to act as a bridge between cultures and an energizing force for collaboration and advocacy in the community.

Location: Milwaukee

Website: marcuscenter.org

Ticket Offices: 414-273-7206



The Milwaukee Jazz Institute promotes jazz through education and performance, building awareness of this art form's ability to transform lives and strengthen

our community. MJI seeks to expand and diversify the local jazz audience and create opportunities for professional and aspiring musicians.



Location: Milwaukee

Website: milwaukeejazzinstitute.org

Ticket Offices: 414-234-5565



Milwaukee Opera Theatre is Milwaukee's micro-brewery for opera, proudly producing small batches of high quality,

local lyric theatre. They tell stories through music... unconventionally.

Location: Milwaukee

Website: milwaukeeoperatheatre.org



Milwaukee Youth Theatre's mission is to provide "theatre experiences by children, for children, affordable to all children." The organization does this by providing students from Milwaukee and the surrounding areas with free opportunities to perform and create live theater. Milwaukee-area students make up 100% of our cast and 80% of our crew. Students from ages 8 to 18 are invited into every aspect



of our productions. Students are taught how to design and build sets, props and costumes, set up and run light and sound equipment, lead and manage a production, create digital content for advertising and communicate their thoughts and emotions effectively to others. These same students then take their productions to Milwaukee-area schools to bring their art to other students, just like them. They perform and answer questions from their peers with confidence, eagerness, and eloquence.

Location: Milwaukee

Website: milwaukeeyouththeatre.org

Phone: 414-390-3900

The Oconomowoc Chamber Orchestra's (OCO) mission is to lead, enrich and inspire the community with vital orchestral events of musical excellence. The OCO brings together high caliber musicians, both local and regional, in a semi-professional setting to perform vital, varied and engaging concerts for our community. The orchestra collaborates with artists of other disciplines (art, dance, theatre) and also with other organizations within the community. The OCO presents concerts and events that celebrate music, embrace local and regional artists, and include a beacon of strong musical vision for the future.



Location: Oconomowoc

Website: oconchamberorch.org



Optimist Theatre strives to engage our community by providing an annual live production of a Shakespeare play and a filmed web series that is accessible, free to everyone, and showcases all corners of Milwaukee. An explicit goal of Shakespeare in the Park is to develop a new generation of theatre lovers, especially young people of color and youth from low-income neighborhoods.

Location: Milwaukee

Website: optimisttheatre.org





Offering harmony in music to help inspire harmony in the community. Our Voice Milwaukee exists to provide a visible presence and a positive voice in and for the Wisconsin LGBT communities.



Location: Milwaukee

Website: cityoffestivalsmenschorus.org



The mission of Piano Arts is to develop innovative ways to foster appreciation and performance of classical music. This is accomplished by identifying and training new generations of pianists with exceptional musical and verbal communication skills, preparing them for performance and presenting them to diverse audiences.



Location: Milwaukee

Website: pianoarts.org

Ticket Offices: 414-962-3055



The mission of the Racine Symphony Orchestra is to enrich, educate and entertain our communities through the power of music. The Racine Symphony is one of Wisconsin's oldest symphony orchestras in

continuous operation, proud to be entering its 90th season as part of the vibrant performing arts community of Racine.



Location: Racine

Website: racinesymphony.org

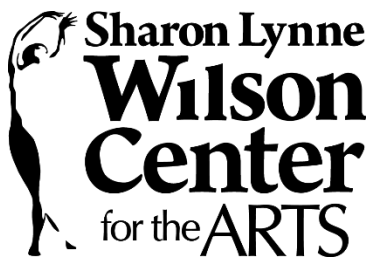
Ticket Offices: 262-636-9285



RUACH is a Jewish arts and music nonprofit organization in Milwaukee, with a mission to awaken creativity through arts enrichment rooted in Jewish values and the rich cultural diversity of Sherman Park. Over 16 years, RUACH's mission has evolved from focusing primarily on Sherman Park's Orthodox Jewish community to constituents that today include the whole spectrum of the Jewish community and the Greater Milwaukee community more generally, with a special focus on the diverse Sherman Park neighborhood, where RUACH has its roots.

Website: ruachmilwaukee.org

Location: Milwaukee



As a multidisciplinary nonprofit cultural arts facility that is recognized as a cultural anchor in the Greater Milwaukee community, it is the mission of the Sharon Lynne Wilson Center for the Arts to be a vibrant destination expanding, inspiring and delivering a lifetime of arts education and experiences, providing audiences of all ages with opportunities to play through engagement, connect with the artist and each other, explore new art forms, dream through artistic expression, and have experiences that inspire and transform.

Location: Brookfield

Website: wilson-center.com

Ticket Offices: 262-781-9520

Signature Dance Company (SDC) is a performance dance company for women and girls ages 3 years old through adults in Milwaukee. Its mission is "sharing, without compromise, all our God gifts and talents while helping others realize their own." This mission promotes community engagement with the performing arts by allowing a diverse group of artists to share and teach their crafts to young people all over Milwaukee. The organization partners with dance teachers who specialize in numerous dance genres, such as ballet, African, jazz, hip-hop, modern and contemporary. These



artists teach youth all over the city of Milwaukee in Signature Dance Company classes and community classes. Other partners who share their gifts include voice and theater teachers, digital and photography. Signature Dance Company also hosts a six-week summer camp each year that attracts between 75-100 girls ages 3 and up who take classes and perform together at the end of the camp. Each year, during Women's History Month, Signature dance company hosts free women's classes.

Location: Milwaukee

Website: signaturedancecompany.org

Phone: 414-213-9640



Summit Players Theatre's mission is to share empowering theatre experiences with children and communities throughout Wisconsin, inclusive of income, background or location. The company promotes engagement with the performing arts, theatre and education in Wisconsin through its yearly Shakespeare in the State Parks tour. Through this program, the company offers free, culturally accessible Shakespeare performances and educational workshops in Wisconsin's state parks. The Shakespeare in the State Parks program is built to be accessible to audience members of all kinds.

However, Summit Players Theatre specifically emphasizes serving demographic communities that may lack access to theatre and Shakespeare resources. These include communities of color, low-income communities and rural communities. The company also prioritizes providing quality theatre experiences to families.

Location: Milwaukee

Website: summitplayerstheatre.com





Sunset Playhouse serves the greater Milwaukee community by creating a nurturing and welcoming environment for all while producing quality entertainment and

comprehensive educational experiences thereby creating opportunities in all aspects of theatre for children and adults.

Location: Elm Grove

Website: sunsetplayhouse.com

Ticket Offices: 262-782-4430



Theatre Gigante is a performing arts organization dedicated to the creation and presentation of performance work that integrates theater, dance, text and music, through which the company fosters interdisciplinary collaborations and original work. To further promote and support its artistic mission, Gigante creates and engages in outreach/educational activities in the community.

Location: Milwaukee

Website: theatregigante.org

Ticket Offices: 414-961-6119



Located in the heart of downtown Waukesha, Waukesha Civic Theatre (WCT) is a gathering place where the community comes together to create and enjoy the performing arts. WCT's mission is to provide quality live theatre performances and educational opportunities that will entertain, enrich, engage and challenge the whole Waukesha community. WCT produces or presents over 50 live performances annually, including a Mainstage season of plays and musicals (engaging the community as creators as well as audience members), cabarets, youth productions

and guest performers. Children and adults of all ages can develop their talent through theatre arts classes, Senior Citizens practice their craft by performing in the WCT Civic Broadway Singers and Civic Senior Players troupes, and everyone can make the transition from audience to performer by auditioning for WCT Mainstage productions.

Location: Waukesha

Website: waukeshacivictheatre.org

Phone: 262-547-4911



WILDSPACE DANCE COMPANY

The mission of
Milwaukee-based Wild
Space Dance Company

is to explore diverse cultural landscapes to create provocative new choreography, site-based performances and educational opportunities. The company cultivates creative experimentation, innovation and collaboration by investing in local artists, and engages audiences with dance in a shared experience of place and community.



Location: Milwaukee

Website: wildspacedance.org

Ticket Offices: 414-271-0307



Founded in 1992, Windfall Theatre is a nonprofit professional theater company that brings its audience courageous, intensely intimate and

alive theater, seeking out little known "gems" from renowned and emerging playwrights.



Location: Milwaukee

Website: windfalltheatre.com

Ticket Offices: 414-332-3963

WISCONSIN CONSERVATORY OF MUSIC

Our mission is to inspire individuals and communities through exceptional music education which is accessible to all. We provide music instruction to over 15,000 students weekly throughout Southeastern Wisconsin. This includes general music, early childhood, music

technology and instrumental instruction in genres including classical, jazz and rock.



Location: Milwaukee

Website: wcmusic.org

Ticket Offices: 414-276-5760



The mission of Xalaat Africa Drum and Dance for Life (Xalaat Africa) is to train and maintain a Youth Ensemble in African-based arts for performance, provide

quality arts experiences and promote physical well-being through arts education. Xalaat Africa seeks to educate and entertain the public, specifically K-12 youth, in the



arts through concerts, workshops and classes in order to provide access to cultural arts related to the African and African American experience.

Location: Milwaukee

Phone: 414-231-0313
